



7306/177-219 Mitchell Road Erskineville NSW

1  1  1 

Situated in a prominent resort-style complex, this flawlessly renovated apartment offering sophistication & tranquillity delivers endless lifestyle appeal in a vibrant neighbourhood. Featuring an open plan layout w/ designer gas kitchen, sleek renovated bathroom, quality finishes, custom cabinetry throughout, separate study/walk in robe, complete w/ secure parking on title.

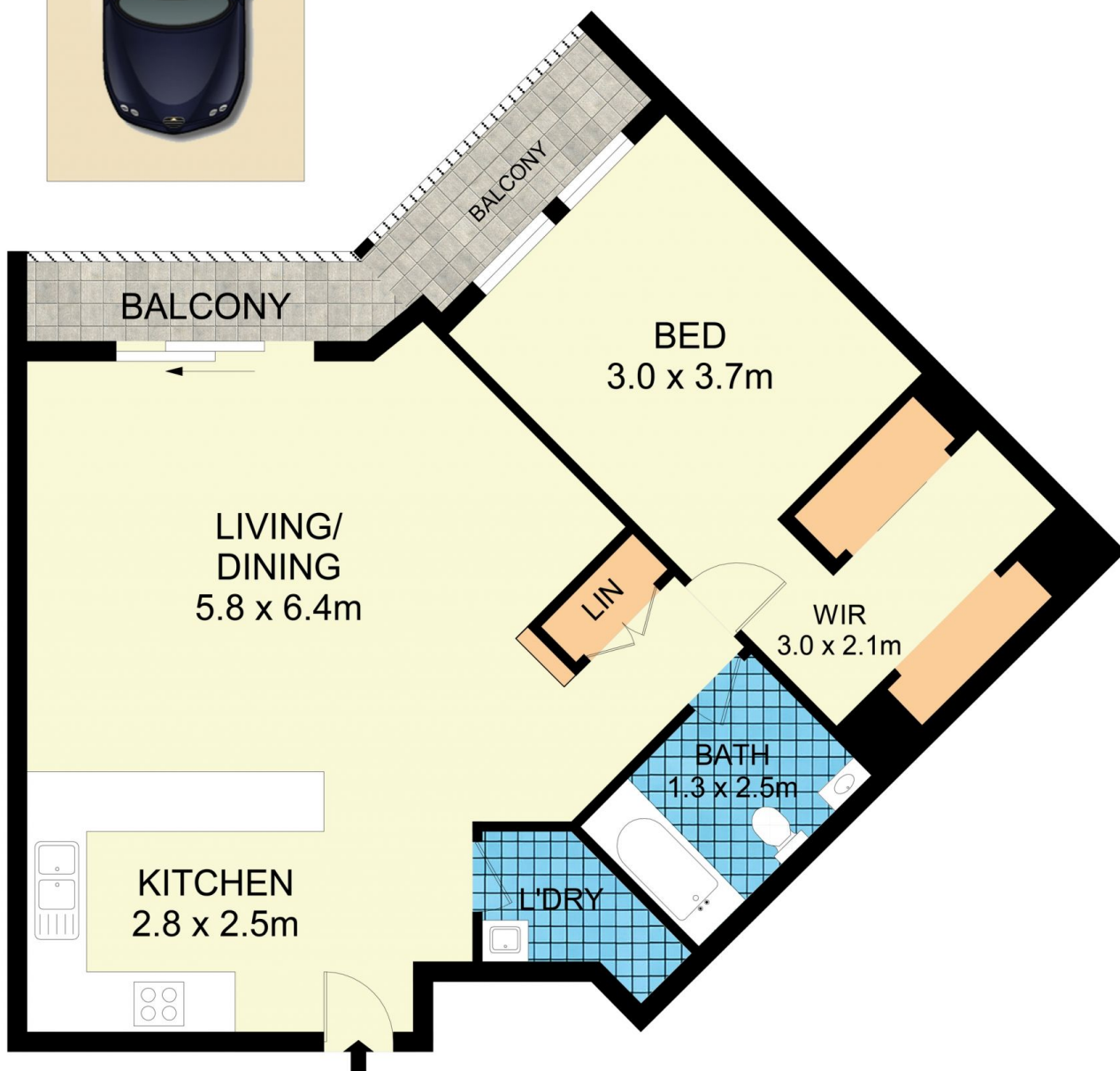
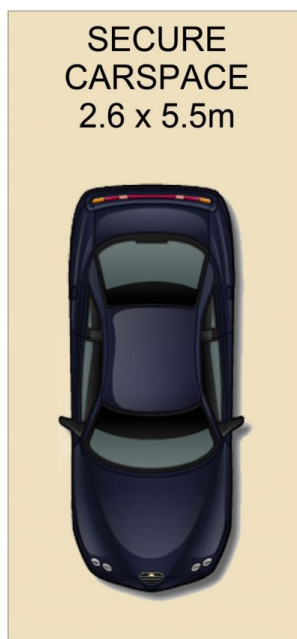
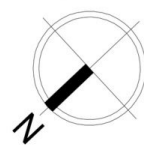
Type : Apartment
Price : OFF MARKET
Building Size : 162 sqm
Land Size : 81 sqm
View : <https://www.melissahmccaffery.com.au/8235879>

Double brick & quality building
 Floor to ceiling glass doors enabling an abundance of natural light
 Open plan living & dining area w/ air conditioning
 Covered balcony & desirable East facing aspect
 Designer gas kitchen w/ stone benchtop & s/s appliances
 Generous master bedroom w/ walk in robe/study

[For full version visit the website](https://www.melissahmccaffery.com.au)



Melissah McCaffery J P
02 9565 5333



7306/177-219 Mitchell Road, Erskineville

Disclaimer

Floor Plan measurements are approximate and are for illustrative purposes only. While we cannot doubt the floor plans accuracy, we make no guarantee, warranty or representation as to the accuracy and completeness of the floor plan