



**8602/177-219 Mitchell Road Erskineville NSW**

2  2  1 

This 104sqm North facing apartment boasts a spacious & light-filled layout w/ generously sized living area that flows effortlessly through to the outdoors. Located in the highly sought-after Sydney Park Village complex, this sleek single level residence has been thoughtfully renovated to showcase bright, open-plan living spaces & stylishly updated interiors - along w/ top floor private tree top views.

**Type** : Apartment  
**Price** : \$ 1,215,000  
**Building Size** : 104 sqm  
**Land Size** : 104 sqm  
**View** : <https://www.melissahmccaffery.com.au/8187939>

Double brick & quality building  
 Floor to ceiling glass sliding doors enabling an abundance of natural light  
 Light filled open plan lounge & dining  
 Newly renovated gas kitchen w/ sleek stainless steel appliances  
 Master bedroom w/ walk-in robe & stylish new ensuite

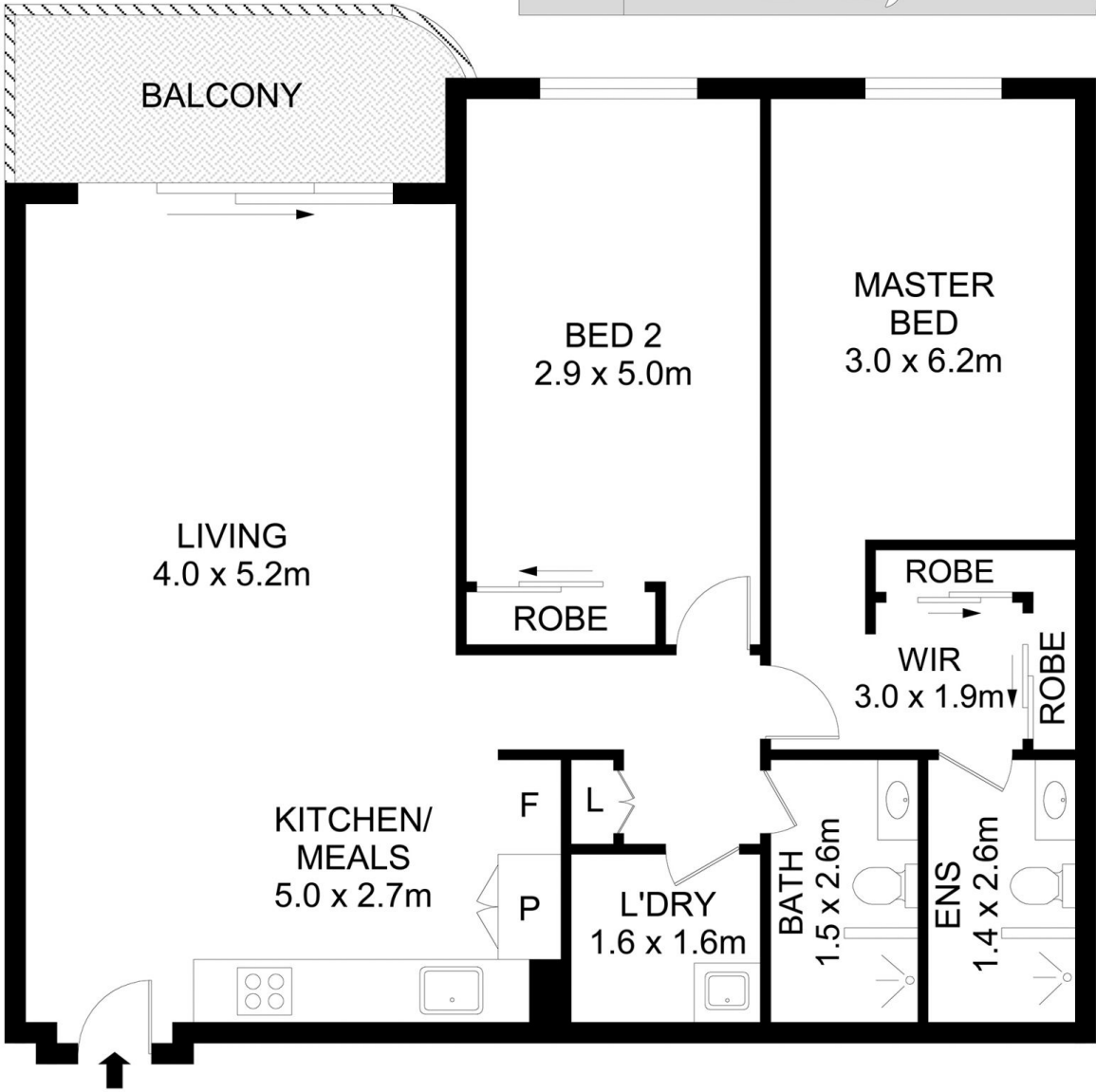
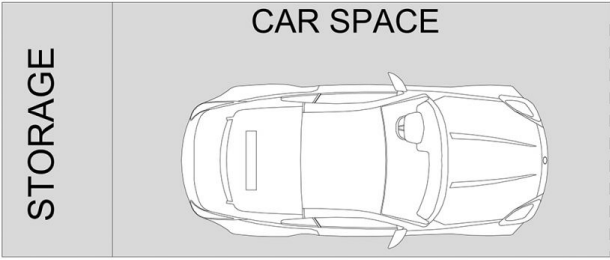
[For full version visit the website](https://www.melissahmccaffery.com.au)



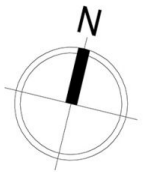
**Melissah McCaffery J P**  
02 9565 5333



**Michael McCaffery**  
02 9565 5333



8602/177-219 Mitchell Road, Erskineville



**Disclaimer**

Floor Plan measurements are approximate and are for illustrative purposes only. While we cannot doubt the floor plans accuracy, we make no guarantee, warranty or representation as to the accuracy and completeness of the floor plan