



309/1 Pearl Street Erskineville NSW

1  1 

With a premier North position of the award-winning Erko complex designed by SJB, this apartment enjoys an expansive open plan design w/ bespoke interiors & impressive floor to ceiling glass doors to maximise the views & natural light in every room. Enjoy picturesque views from every room & privacy within a vibrant community - an idyllic oasis for relaxation. Erko is renowned for its quality design, community spirit & green credentials in a prized location 500m to the cafe-lined high street, artisan bakeries, wine bars & beer gardens.

Type : Apartment
Price : \$ 835,000
Building Size : 72 sqm
Land Size : 72 sqm
View : <https://www.melissahmccaffery.com.au/8168259>

Sunlit open plan living & dining
 North facing entertainers' terrace w/ sweeping North city & district views
 Designer gas kitchen w/ stone benchtop & Smeg

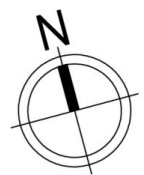
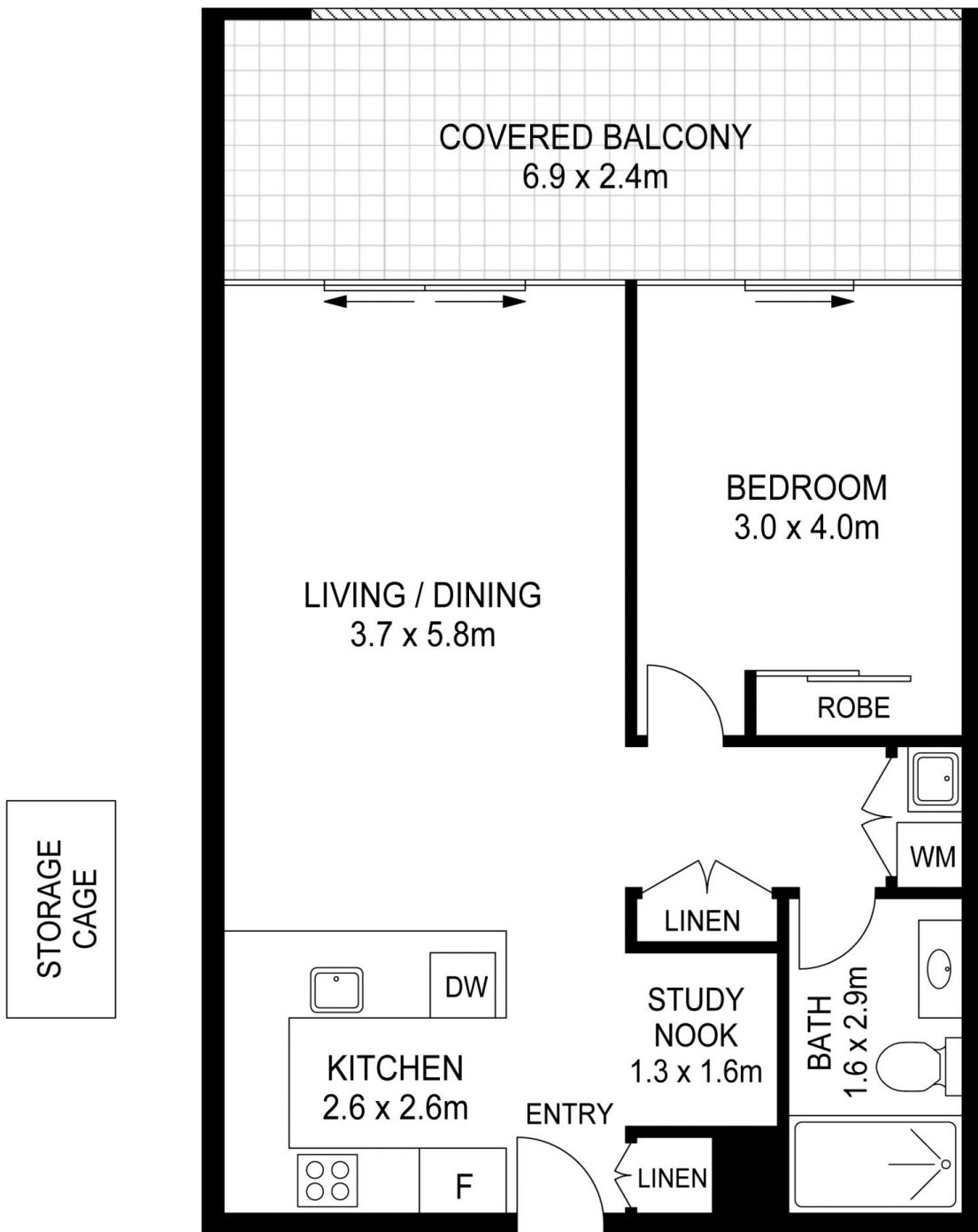


Melissah McCaffery J P
02 9565 5333



Michael McCaffery
02 9565 5333

[For full version visit the website](https://www.melissahmccaffery.com.au)



C309 / 1 Pearl Street, Erskineville

Disclaimer

Floor plan measurements are approximate and are for illustrative purposes only. While we cannot doubt the floor plans accuracy, we make no guarantee, warranty or representation as to the accuracy and completeness of the floor plan