



**14503/177-219 Mitchell Road Erskineville NSW**

3  2  2 

A rare 3 bed residence in one of the area's most admired buildings w/ inspired design cues, this apartment is a unique offering in a village position. With impressive space of multiple aspects & corner position, a clever floorplan providing a serene lifestyle in a great location. This magnificently appointed residence presents the astute purchaser w/ a desirable lifestyle opportunity in one of Sydney's most vibrant & cosmopolitan neighbourhoods. The radiant living/dining area & adjoining kitchen exude both style & functionality, while the spacious balcony offers the perfect spot to unwind and soak in the sun, w/ the floor to ceiling glass doors effortlessly merging indoor and outdoor living. Perfect for entertaining & families - the ideal sanctuary for growing families looking for low-maintenance, effortless living & tightly held resort style community.

**Type** : Apartment  
**Price** : \$ 1,450,000  
**Land Size** : 149 sqm  
**View** : <https://www.melissahmccaffery.com.au/8028030>

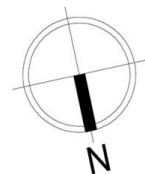
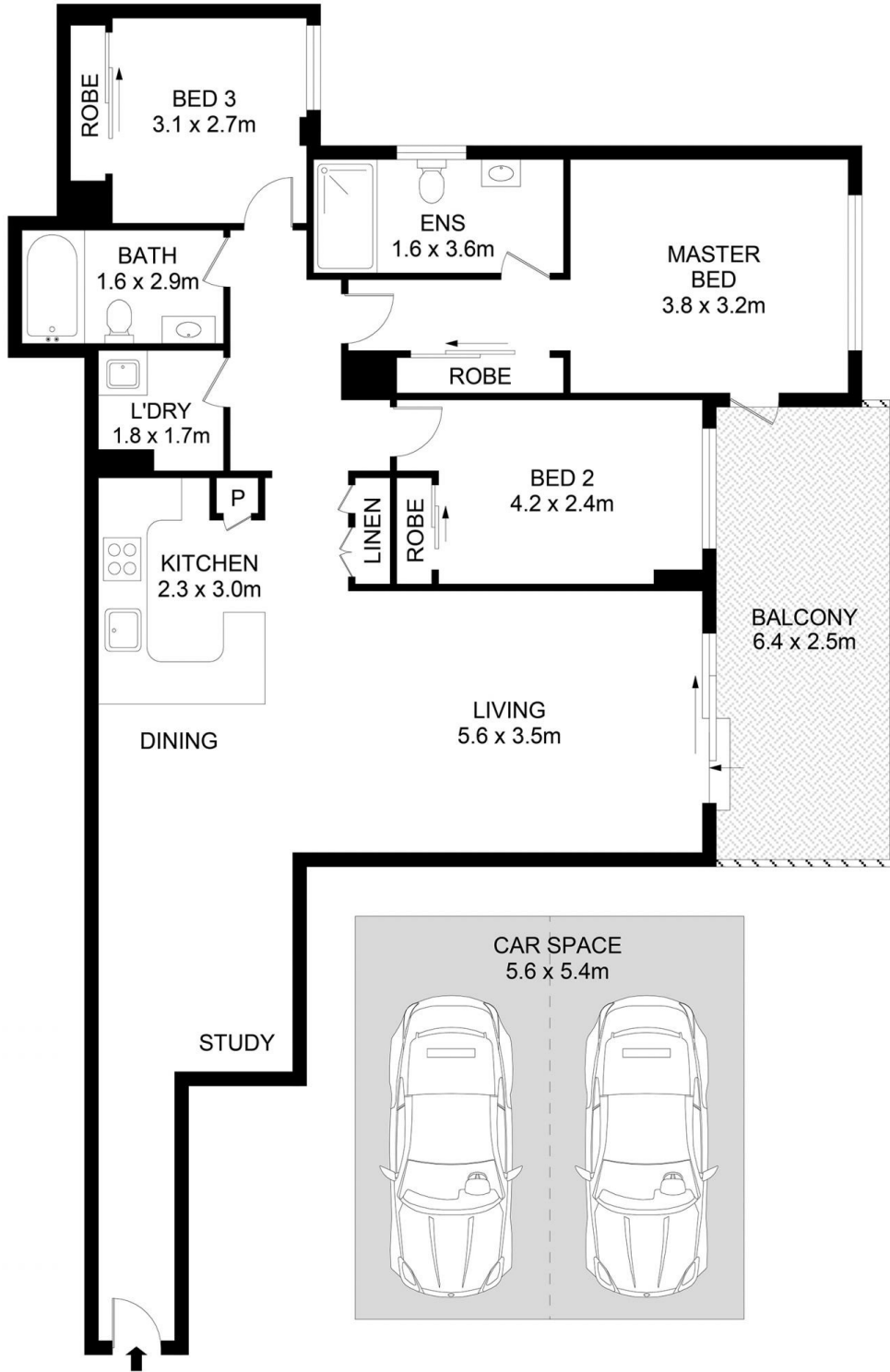


**Melissah McCaffery J P**  
0295655333



**Michael McCaffery**  
0295655333

[For full version visit the website](https://www.melissahmccaffery.com.au)



14503/177-219 Mitchell Road, Erskineville



**Disclaimer**

Floor Plan measurements are approximate and are for illustrative purposes only. While we cannot doubt the floor plans accuracy, we make no guarantee, warranty or representation as to the accuracy and completeness of the floor plan